

## Chemical composition, phytotoxicity and cytogenotoxicity of essential oil from leaves of *Psidium guajava* L. cultivars

Composição química, fitotoxicidade e citogenotoxicidade do óleo essencial de folhas de cultivares de *Psidium guajava* L.

Composición química, fitotoxicidad y citogenicidad del aceite esencial de hojas de cultivares de *Psidium guajava* L.

Received: 06/29/2021 | Reviewed: 07/04/2021 | Accept: 07/08/2021 | Published: 07/21/2021

### Loren Cristina Vasconcelos

ORCID: <https://orcid.org/0000-0002-0268-8529>  
Federal University of Espírito Santo, Brazil  
E-mail: [loren-vasconcelos@hotmail.com](mailto:loren-vasconcelos@hotmail.com)

### Esdras de Souza Santos

ORCID: <https://orcid.org/0000-0002-4505-6484>  
Federal University of Espírito Santo, Brazil  
E-mail: [esdrass.santos@outlook.com](mailto:esdrass.santos@outlook.com)

### Luiza Alves Mendes

ORCID: <https://orcid.org/0000-0002-5252-0222>  
Federal University of Espírito Santo, Brazil  
E-mail: [luizavargasmendes@hotmail.com](mailto:luizavargasmendes@hotmail.com)

### Marcia Flores da Silva Ferreira

ORCID: <https://orcid.org/0000-0003-1541-6634>  
Federal University of Espírito Santo, Brazil  
E-mail: [mfloressf@gmail.com](mailto:mfloressf@gmail.com)

### Milene Miranda Praça Fontes

ORCID: <https://orcid.org/0000-0001-7738-9518>  
Federal University of Espírito Santo, Brazil  
E-mail: [milenemiranda@yahoo.com.br](mailto:milenemiranda@yahoo.com.br)

### Abstract

Natural products with biological activity, such as essential oils, can be used in the search for and development of ecological herbicides as an alternative to reduce the damage caused by synthetic herbicides. This work aimed to determine the chemical composition and phytotoxic properties of the essential oils, at concentrations of 3000, 1500, 750, 375 and 187.5 µg/mL, of four cultivars of *Psidium guajava* (guava) evaluated on germination and root growth of plant models *Lactuca sativa* and *Sorghum bicolor*, as well as in the *L. sativa* cell cycle. Exposure to essential oils reduced germination and root growth in bioassays, especially at the highest concentration (3000 µg/mL). The essential oils interfered in the normal dynamics of the cell cycle of *L. sativa* at most concentrations, causing a decrease in the mitotic index and increasing of chromosomal alterations, evidencing aneugenic and clastogenic action. The biological activity of the oils was associated with the presence of sesquiterpenes and monoterpenes found here, such as caryophyllene oxide, (E)-caryophyllene, and limonene. Thus, the essential oils of cultivars of guava demonstrated the promising potential for use as natural herbicides.

**Keywords:** Biological activity; Bioherbicides; Chromosome; Plant bioassay; Terpenes; Mitotic index.

### Resumo

Produtos naturais com atividade biológica, como os óleos essenciais, podem ser utilizados na busca e desenvolvimento de herbicidas ecológicos como alternativa para reduzir os danos causados pelos herbicidas sintéticos. Este trabalho teve como objetivo determinar a composição química e propriedades fitotóxicas de óleos essenciais, nas concentrações de 3000, 1500, 750, 375 e 187,5 µg/mL, de quatro cultivares de *Psidium guajava* (goiaba) avaliadas na germinação e crescimento radicular das plantas modelos *Lactuca sativa* e *Sorghum bicolor*, bem como no ciclo celular de *L. sativa*. A exposição aos óleos essenciais reduziu a germinação e o crescimento radicular nos bioensaios, especialmente na concentração mais elevada (3000 µg/mL). Os óleos essenciais interferiram na dinâmica normal do ciclo celular de *L. sativa* na maioria das concentrações, causando diminuição do índice mitótico e aumento das alterações cromossômicas, evidenciando ação aneugênica e clastogênica. A atividade biológica dos óleos foi associada à presença de sesquiterpenos e monoterpenos aqui encontrados, como óxido de cariofileno, (E)-cariofileno e limoneno. Assim, os óleos essenciais de cultivares de goiaba demonstraram potencial promissor para uso como herbicidas naturais.

**Palavras-chave:** Atividade biológica; Bioherbicidas; Cromossomos; Bioensaio vegetal; Terpenos; Índice mitótico.

### Resumen

Los productos naturales con actividad biológica, como los aceites esenciales, pueden utilizarse en la búsqueda y desarrollo de herbicidas ecológicos como alternativa para reducir el daño causado por los herbicidas sintéticos. Este trabajo tuvo como objetivo determinar la composición química y propiedades fitotóxicas de los aceites esenciales, a concentraciones de 3000, 1500, 750, 375 y 187.5 µg/mL, de cuatro cultivares de *Psidium guajava* (guayaba) evaluados en la germinación y crecimiento radicular de modelos vegetales *Lactuca sativa* y *Sorghum bicolor*, así como en el ciclo celular de *L. sativa*. La exposición a los aceites esenciales redujo la germinación y el crecimiento de las raíces en los bioensayos, especialmente a la concentración más alta (3000 µg/mL). Los aceites esenciales interfirieron en la dinámica normal del ciclo celular de *L. sativa* en la mayoría de concentraciones, provocando disminución del índice mitótico y aumento de alteraciones cromosómicas, evidenciando acción aneugénica y clastogénica. La actividad biológica de los aceites se asoció con la presencia de sesquiterpenos y monoterpenos que se encuentran aquí, como el óxido de cariofileno, (E)-cariofileno y limoneno. Así, los aceites esenciales de cultivares de guayaba demostraron el potencial prometedor para su uso como herbicidas naturales.

**Palabras clave:** Actividad biológica; Bioherbicidas; Cromosoma; Bioensayo vegetal; Terpenos; Índice mitótico.

## 1. Introduction

The use of synthetic herbicides in crop fields has been questioned due to the environmental impact and toxicological implications caused to farmers and consumers by the application of these products (Jabran et al., 2015; Ribas & Matsumura, 2009). Additionally, weeds are becoming increasingly resistant due to the few modes of action present in herbicides, increasing the demand for more efficient, sustainable, and safe active ingredients (Dayan & Duke, 2014).

Allelopathy is a biochemical strategy in which plants negatively influence or benefit the growth and development of other plants by the action of allelochemicals (secondary metabolites) released into the environment (Inderjit et al., 2011; Rice, 2012). These compounds found in natural products, such plant extracts and essential oils, are biodegradable and have a wide structural diversity with a wide variety of modes of action (Jana & Biswas, 2011). In this context, natural substances that have allelopathic activity have already been recognized as an alternative for the control of agricultural pests and the development of new herbicides (Dayan & Duke, 2014).

Essential oils are a complex mixture of volatile and lipophilic substances produced by secondary metabolism of individual plants. They have associated the adaptations to the environment, like the attraction of pollinators and seed dispersers, interactions with microorganisms and other plants, protection against predators, and abiotic stresses (Boaro et al., 2019). The literature presents several works that report on the biological activity of essential oils as herbicides, pesticides and biocidal agents (Giunti et al., 2021; Grul'ová et al., 2020; Hazrati et al., 2017; Navarro-Rocha et al., 2020; Rajkumar et al., 2020; Taban et al., 2020). These effects are related to the complex interaction between the compounds present in essential oil, being mostly monoterpenes and sesquiterpenes. These interactions allow each compound to modulate or alter the effects of other ones (Sharifi-Rad et al., 2017).

Myrtaceae is an important family of pantropical plants with some species rich in essential oils (Beech et al., 2017; Wilson, 2010) known for its allelopathic potential and the biological activity (Caputo et al., 2020; Durazzini et al., 2019; Habermann et al., 2017; Scalvenzi et al., 2017). The genus *Psidium* is one of the most representative of the family with about more than 150 species of plants (Hayes, 1953). However, little is known about the allelopathic activity of its species, especially with regard to essential oils. Recently, studies of essential oils from different species of the genus *Psidium*, *Psidium cattleianum* (araçá-vermelho), *P. myrtoides* (araçá-roxo), *P. friedrichsthalianum* (araçá-azedo), *P. gaudichaudianum* (araçá) and *P. guajava* (guava), reported the ability of these oils to inhibit the germination of seeds and the growth of other plants, as *Lactuca sativa*, *Sorghum bicolor* and *Lycopersicon esculentum*, being considered potential sources of natural herbicides (Almeida et al., 2019; Vasconcelos et al., 2019).

*Psidium guajava* L. (Myrtaceae), popularly known as guava, is one of the most studied species of the genus. With

pleasant taste and high nutritional value rich in antioxidant compounds and also has antimicrobial properties, guava stands out in the food industry and in popular medicine (Shu et al., 2012). Studies with the essential oil of *P. guajava* leaves showed the antimicrobial, antiproliferative, antiparasitic, anti-inflammatory, antioxidant and cytotoxic effects of the species (Chaturvedi et al., 2019; Jerônimo et al., 2021; Lee et al., 2013; Weli et al., 2019).

Essential oils extracted from leaves of different *P. guajava* cultivars grown under the same conditions and in similar environments have shown differential larvicidal activity on the *Aedes aegypti* L. (Mendes et al., 2017). It has also been shown that the genetic and environmental factor are an important constituent of the composition of the essential oils of guava (Souza et al., 2017). These studies show that the use of these oils can be enhanced by choosing the appropriate genotype. Different genotypes can promote variation in the composition of essential oils, leading to different properties and, therefore, are of great interest in the management and control of weeds.

Contemplating the above, this work aimed to (a) investigate of the chemical constituents of the essential oil from the leaves from four guava cultivars (Cortibel Branca LG, Cortibel VII, Paluma and Século XXI), (b) evaluate the allelopathic effects on the germination and initial development of the model plants *Lactuca sativa* L. and *Sorghum bicolor* (L.) Moench, and (c) assess of the cytogenotoxicity of the respective oils on the cell cycle of *L. sativa*.

## 2. Methodology

### 2.1 General experimental procedures

The chromatographs used in essential oil analysis were by gas chromatography with flame ionization detector (GC-FID) model Shimadzu GC-2010 Plus and gas chromatography coupled to mass spectrometry (GC-MS) model Shimadzu GCMS-QP2010 SE. Seeds of *L. sativa* (commercial cultivar Crespa Grand Rapids – TBR) obtained from ISLA Sementes and *S. bicolor* (commercial cultivar Al Precious) from BRSEEDS. The 2% (w.v) acetic orcein dye was purchased from Sigma-Aldrich.

### 2.2 Plant material

Leaves were collected from cultivars Cortibel Branca LG (C4), Paluma (PAL), Século XXI (SEC), and the superior genotype of guava Cortibel VII (C7) in the experimental area of the Federal University of Espírito Santo in Alegre, ES- Brazil, altitude 254 m, coordinates 20° 45' 50" S 41° 31' 58" W, subtropical climate by Köppen-Geiger climate classification: Cwa, in the morning at breast height (1.3 m) and around the canopy diameter. The experiment followed a randomized block design (RBD) with three blocks. Samples were collected around treetop using young and old leaves from all plants and blocks in order to randomize any differences between them. After, the leaves were dried in the shade and at room temperature for one week.

### 2.3 Chemical characterization of essential oils

The essential oils were extracted from 500 g of dry leaves of the C4, C7, PAL, and SEC guava cultivars by hydrodistillation technique in Clevenger apparatus. The samples were divided and placed in two round-bottom volumetric flasks of 2000 mL with distilled water and distilled for approximately 4 h. The extractions used about 250 g of leaves in approximately 1000 mL of water. The hydrolate obtained was centrifuged at 5000 RPM (rotations per minute) for 5 min to separate the aqueous and oily phases. The essential oils (supernatant) were removed with a Pasteur pipette and stored in amber glass bottles in a freezer at -20°C.

The chemical composition of the essential oils was determined by gas chromatography coupled to mass spectrometry (GC-MS) and the quantification by gas chromatography with flame ionization detector (GC-FID). The analyses were

performed using a fused silica capillary column (30 m x 0.25 mm) with the stationary phase RTX®-5MS (0.25 µm internal diameter). Helium was used as the carrier gas with flow and linear rate of 2.80 mL min<sup>-1</sup> and 50.80 cm seg<sup>-1</sup> (GC-FID); and 1.98 mL min<sup>-1</sup> and 50.90 cm seg<sup>-1</sup> (GC-MS), respectively. The temperature of the injector was 220°C and FID and MS detector temperature of 240 °C and 200 °C, respectively. The initial temperature of the furnace was 40°C, which remained for 3 min and then gradually increased by 3°C/min until reaching 180°C. Chemical constituents were identified by mass spectra obtained compared with data of spectral library, retention index (RI), and literature data (Adams, 2007; NIST, 2011). The GC-MS and GC-FID analyses were performed as described by Mendes et al. (2017).

## 2.4 Phytotoxicity analyses

The phytotoxicity effects of the essential oils of the cultivars of *P. guajava* was evaluated against the selected plants, *L. sativa* (dicot) and *S. bicolor* (monocot), in laboratory bioassays. These model plants have been widely used to verify the effects of chemical compounds on germination and initial development, as they are highly sensitive to toxic substances, have fast germination and low cost (Alves et al., 2018; Vasconcelos et al., 2019). The solutions of essential oils of *P. guajava* were prepared by intense mixed and agitation with the solvent composed of distilled water, acetone (2% v.v), and Tween 80® (0.05% v.v). Five oil concentrations were tested: 3000, 1500, 750, 375 and 187.5 µg/mL. The solvent used in the preparation of the solutions was previously compared with water, and both presented the same statistical results. So, the water was applied as a negative control in the analysis, omitting the solvent. The herbicide glyphosate was used as positive control, at 0.01% (v.v), the same concentration recommended for commercial use. Petri dishes were lined with filter paper and treated with 2 mL of the solutions of essential oils and negative and positive controls. In each treatment, 25 seeds of each plant model were used, with five replications each. The plates were wrapped with plastic film and incubated in a germination chamber (BOD), under photoperiod with 16 h of light, at 24±2°C where they remained for 120 h.

The germination percentage (GP) – number of germinated seeds after 48 h of exposure to the treatments, calculated by the ratio between the number of germinated seeds times 100 divided by the total number of exposed seeds per repetition; germination speed index (GSI) – number of germinated seeds counted every 8 h during the first 48 h of exposure to the treatments, calculated by formula  $(N1 * 1) + (N2 - N1) * 1/2 + (N3 - N2) * 1/3 + \dots (Ny - (Ny-1)) * 1/y$ , where: Ny refers to the number of seeds germinated within a given period; y: represents the total number of time intervals; and root growth (RG) – measured (in mm) with the aid of a digital caliper after 48 h of exposure to the treatments of model plants exposed to the essential oils of *P. guajava* cultivars were evaluated.

## 2.5 Cytotoxicity analyses

To evaluate the cytotoxicity of the essential oils of the different guava cultivars, meristematic cell slides of *L. sativa* (lettuce) roots were prepared. Only lettuce roots were used because they are considered a suitable model for microscopic analysis (cytotoxic analysis) to test the toxic effect of chemical compounds (Silveira et al., 2017). In addition, lettuce is highlighted because it presents high proliferative activity, rapid growth, high number of seeds, large chromosomes, high sensitivity to mutagenic and genotoxic compounds, and easily manipulated roots (Andrade-Vieira et al., 2014; Aragão et al., 2017). Lettuce roots were collected at 48 h of exposure in the phytotoxicity assays and fixed in ethanol: acetic acid (3:1) and stored at -20°C to perform the analysis. The fixer was changed once after 10 min and once after 24 h. Lettuce is one of the most common species used in the evaluation of the toxic effects of substances. Besides the advantages mentioned earlier in this work, it presents a small number of chromosomes ( $2n = 2x = 18$ ) with easy visualization under the microscope, and roots easy to manipulate for slide preparation and microscopic analyses (Matoba et al., 2007; Silveira et al., 2017).

The previously fixed roots were washed with distilled water and hydrolyzed in 5N HCl for 18 min at room

temperature. We prepare the slides using the crushing technique, stained with 2% (w.v) acetic orcein, before being covered by a coverslip and observed under the light microscope. The mitotic index (MI) was obtained by observation of 5000 cells in mitosis per treatment and controls (1000 cells per lamina). The frequency of nuclear alterations (NA) and chromosomal alterations (CA) in the cells observed was also evaluated according to Pinheiro et al. (2015).

## 2.6 Statistical analyses

The experiments were conducted in a completely randomized design (CRD) with five replications for each treatment (3000, 1500, 750, 375, and 187.5  $\mu\text{g/mL}$ ) and control (distilled water and glyphosate). The results of the analyses on phyto- and cytogenotoxicity were further inspected in an analysis of variance (ANOVA), and the resulting mean values in a Dunnett's test at 5% significance for compared the treatments with the controls. All statistical analyses were performed using the R computing environment (R Development Core Team, 2020).

## 3. Results and Discussion

### 3.1 Chemical characterization of essential oils

Twenty-nine compounds were identified in the essential oils from leaves of guava cultivars in GC-MS analyses. Were only considered compounds with a relative area above 1% after normalization, which accounted for 96.8% to 98.4% of the total compounds present in the four cultivars. The compounds that had a relative area above 10% were considered major compound; these are presented in Table 1 adapted from Mendes et al. (2017). Our analyses showed that most of the chemical constituents of the all essential oils were sesquiterpenes, which more of 70% in their composition and smaller amounts of monoterpenes, varying between 1.4% and 22.9% (Table 1). Other chemical characterizations of essential oils of *P. guajava* with the same terpenic nature were found in others works (Satyal et al., 2015; Souza et al., 2017).

The oil of the cultivar SEC was the only one constituted of 100% sesquiterpenes, of which 51,5% were hydrogenated and 48,5% oxygenated. Among the major compounds found, stand out (E)-caryophyllene (26.6%) and caryophyllene oxide (15.5%) in SEC. Similar to SEC, PAL oil showed (E)-caryophyllene (19.4%) and caryophyllene oxide (16.6%) in the highest amounts. The chromatographic profile of C4 presented the highest concentration of monoterpenes among all oils with 23,7% limonene (17.8%) and  $\beta$ -bisabolol (19.5%) were majority compounds. In the superior genotype C7, the most prominent compounds in the oil were  $\alpha$ -humulene (20.8%), (E)-caryophyllene (19.8%) and selin-11-en-4 $\alpha$ -ol (10.9%). The major compounds identified here (limonene, (E)-caryophyllene,  $\alpha$ -humulene, caryophyllene oxide, selin-11-en-4 $\alpha$ -ol, and  $\beta$ -bisabolol) corresponded to chemical characterizations reported in other studies on essential oils of *P. guajava* (Khadhri et al., 2014; Soliman et al., 2016; Souza et al., 2017).

**Table 1.** Chemical identification and relative peak area (%) of the compounds present in the essential oils of four cultivars of *Psidium guajava*.

N	Compound <sup>a</sup>	RIcal <sup>b</sup>	RI <sub>tab</sub> <sup>c</sup>	Cultivar / A <sub>rel</sub> (%) <sup>d</sup>			
				SEC	PAL	C4	C7
1	Benzaldehyde	960	952	-	-	1.7	-
2	Limonene	1028	1024	-	-	17.8	-
3	1,8-Cineole	1031	1026	-	8.4	5.1	4.1
4	α-Terpineol	1190	1186	-	1.4	-	-
5	α-Copaene	1375	1374	1.8	1.2	-	-
6	(E)-Caryophyllene	1417	1417	26.6	19.4	7.6	19.8
7	Aromadendrene	1438	1437	4.3	2.9	-	-
8	α-Humulene	1452	1452	3.3	2.5	-	20.8
9	α-Curcumene	1484	1487	-	-	4.5	-
10	β-Selinene	1486	1489	7.6	5.6	-	7.8
11	α-Selinene	1495	1498	6.5	4.9	2.2	7.1
12	β-Bisabolene	1509	1505	-	-	5.6	-
13	β-Himachalene	1511	1500	-	-	2.9	-
14	B-Sesquiphellandrene	1523	1521	-	-	2.8	-
15	α-Bisabolene	1533	1536	-	-	2.6	-
16	(E)-Nerolidol	1566	1561	3.8	3.4	6.9	5.7
17	Caryophyllene oxide	1582	1582	15.5	16.6	3.2	5.4
18	Ledol	1600	1602	1.3	1.3	-	-
19	Humulene epoxide	1608	1608	-	-	-	4.0
20	Selina-6-en-4-ol	1612	1615	-	-	1.6	-
21	epi-Cubenol	1629	1627	2.7	2.8	2.8	-
22	γ-Eudesmol	1632	1630	3.2	3.7	-	7.0
23	Aromadendrene epoxide	1639	1639	8.1	9.2	-	-
24	τ-Cadinol	1643	1640	1.6	1.6	-	4.5
25	α-Muurolol	1648	1644	1.8	1.9	-	-
26	Selin-11-en-4α-ol	1658	1658	6.7	7.4	3.5	10.9
27	β-Bisabolol	1673	1674	2.7	2.4	19.5	1.3
28	α-Bisabolol	1685	1685	-	-	1.6	-
29	(Z,E)-α-Bergamotol	1688	1690	-	-	4.9	-
Total Identified				97.5	96.6	96.8	98.4
Hydrocarbon monoterpenes				-	-	18.4	-
Oxygenated monoterpenes				-	10.1	5.3	4.2
Hydrocarbon sesquiterpenes				51.4	37.8	29.1	56.4
Oxygenated sesquiterpenes				48.6	52.1	45.5	39.4
Others				-	-	1.7	-

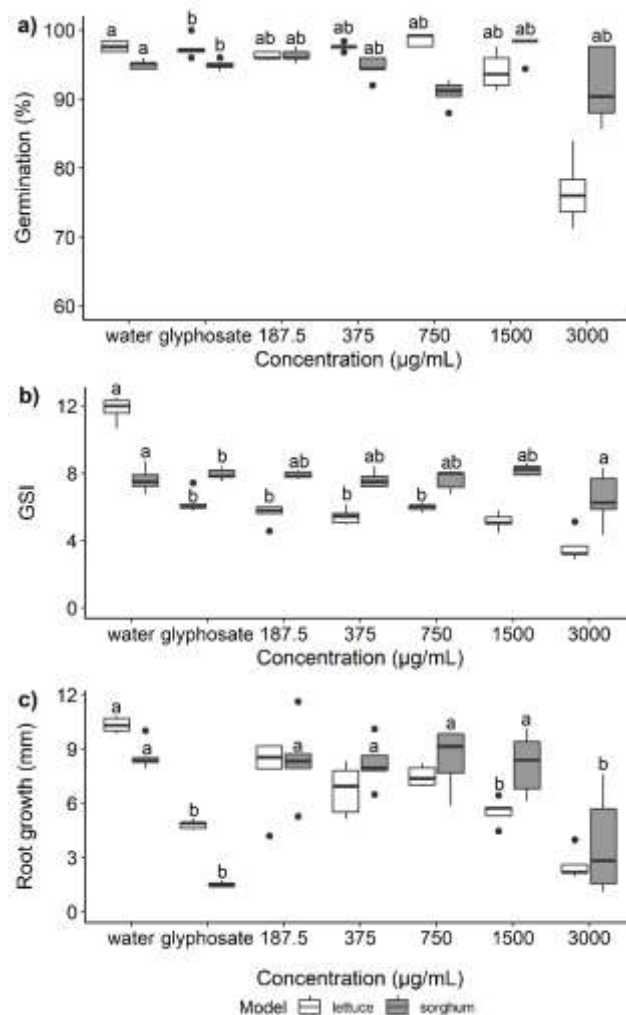
<sup>a</sup>Compounds listed in the elution order using column of Rtx®-5MS. <sup>b</sup>Retention index calculated. <sup>c</sup>Tabulated retention index (Adams, 2007). <sup>d</sup>Compounds were identified with areas related to >1%. Cultivars: Século XXI (SEC), Cortibel Branca LG (C4), Paluma (PAL) e Cortibel VII (C7).  
Source: Authors.

In this study, the hydrogenated sesquiterpene (E)-caryophyllene was the main chemical constituent found in guava cultivars oils, appearing as a major component in three of the four oils evaluated. Differences in the chemical profile of essential oils are common in many works. The quantity and chemical composition of oils is influenced by several factors that can cause significant changes in the production of specialized metabolites. These can be determined by genetic characters, or by biotic and abiotic factors (Aslam et al., 2017; Souza et al., 2017). The stimuli resulting from the environment where the plant is located can redirect the metabolic route, leading to biosynthesis of different compounds, however genetic variations are very important factors for these variations in the composition of essential oils (Boaro et al., 2019).

### 3.2 Phytotoxicity effects

The phytotoxic potential was tested of the essential oils of *P. guajava* cultivars by evaluating the inhibition of seed germination, germination speed index, and root growth of lettuce and sorghum. Phytotoxic analyzes in the model plants showed that for all oils, in general, the highest concentrations had the most significant effects on the evaluated variables, reducing them. C7 and C4 oils caused more evident effects. These oils significantly reduced the percentage germination of lettuce at 375, 750 and 3000  $\mu\text{g/mL}$  compared to the water, and of sorghum at 3000  $\mu\text{g/mL}$  compared to both controls (water and glyphosate). SEC caused effects in percentage germination of lettuce only at 3000  $\mu\text{g/mL}$ , and sorghum at 750  $\mu\text{g/mL}$ , concerning glyphosate and water, respectively (Figure 1a, 2a, 3a, 4a).

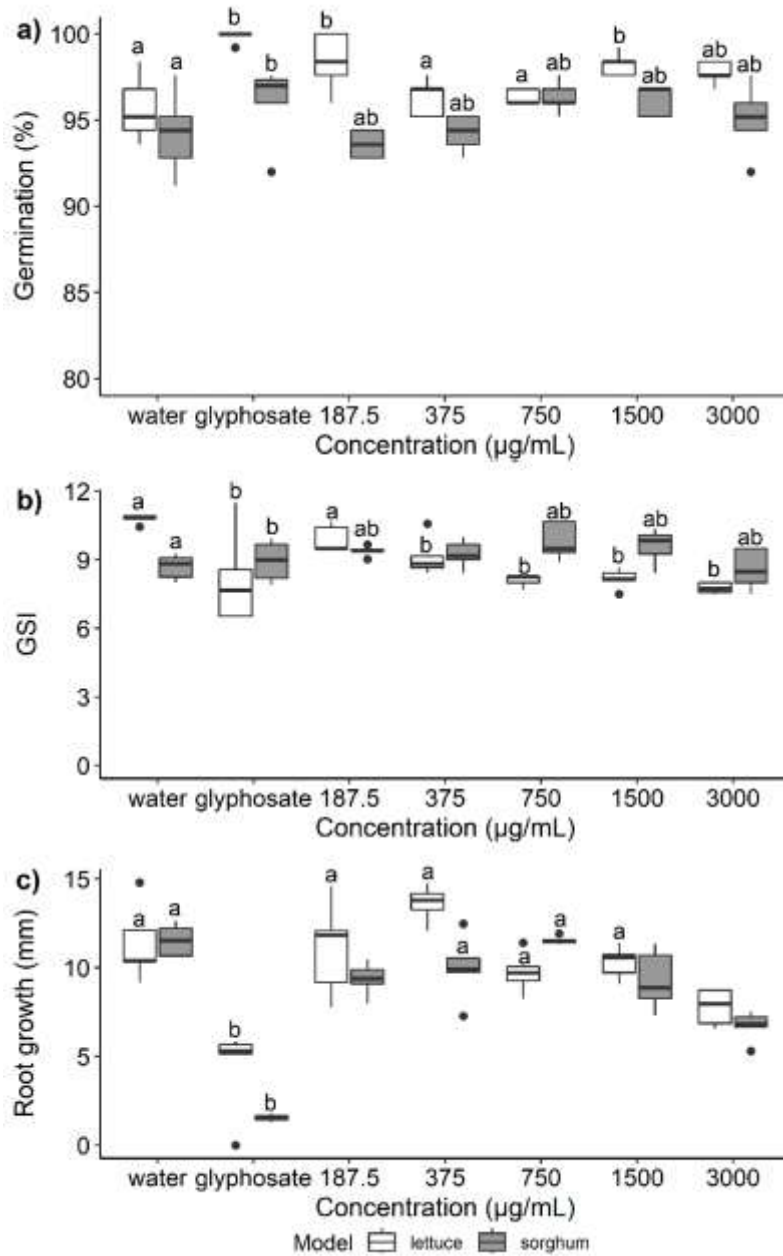
**Figure 1.** Effect of Sécuro XXI (SEC) essential oil on (a) germination, (b) germination speed index (GSI), and (c) root growth of *Lactuca sativa* and *Sorghum bicolor*. The lowercase letters above boxplots indicates significant differences. Boxplots followed by the letter a are statistically identical to water, boxplots followed by b are statistically identical to glyphosate and boxplots not followed by letters are statistically different from water and glyphosate by Dunnett's test ( $P < 0.05$ ).



Source: Authors.

Regarding the GSI, all concentrations of the oils of the tested cultivars negatively interfered in the GSI of the lettuce seeds, presenting statistical similarity with the glyphosate, except for 187.5  $\mu\text{g/mL}$  of C7 and 1500  $\mu\text{g/mL}$  of SEC. In lettuce, SEC oil caused the highest inhibition in the GSI with a reduction of 69.35% at 3000  $\mu\text{g/mL}$ , whereas sorghum showed significant reduction only at 3000  $\mu\text{g/mL}$  of C4 and 375  $\mu\text{g/mL}$  of PAL, compared to the water (Figure 1b, 2b, 3b, 4b).

**Figure 2.** Effect of Paluma (PAL) essential oil on (a) germination, (b) germination speed index (GSI), and (c) root growth of *Lactuca sativa* and *Sorghum bicolor*. The lowercase letters above boxplots indicates significant differences. Boxplots followed by the letter a are statistically identical to water, boxplots followed by b are statistically identical to glyphosate and boxplots not followed by letters are statistically different from water and glyphosate by Dunnett's test ( $P < 0.05$ ).

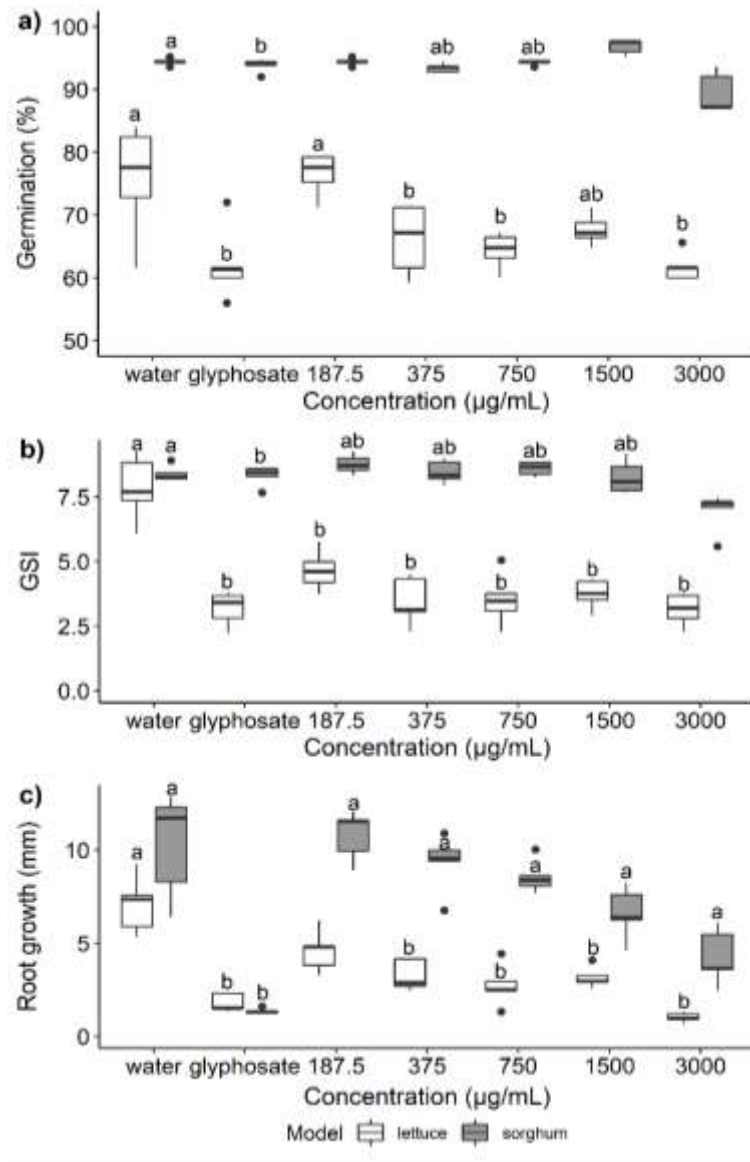


Source: Authors.

In RG evaluation, the roots of lettuce treated with essential oils of C7 and C4 presented drastic reduction. The effect of the concentrations was comparable to the glyphosate, except for the lowest concentration (187.5 µg/mL) of C4. In sorghum, C7 oil interfered negatively in the root growth at 3000 and 1500 µg/mL, while C4 oil caused a reduction of 47.29% at 3000 µg/mL (Figure 1c, 2c). The seedlings of lettuce and sorghum also suffered negative effects on root growth from the oils of PAL and SEC. At a concentration of 3000 µg/mL, the PAL and SEC oils caused a severe reduction of root growth in lettuce (31.67%) and sorghum (56.45%) in comparison to the water (Figure 3c, 4c).



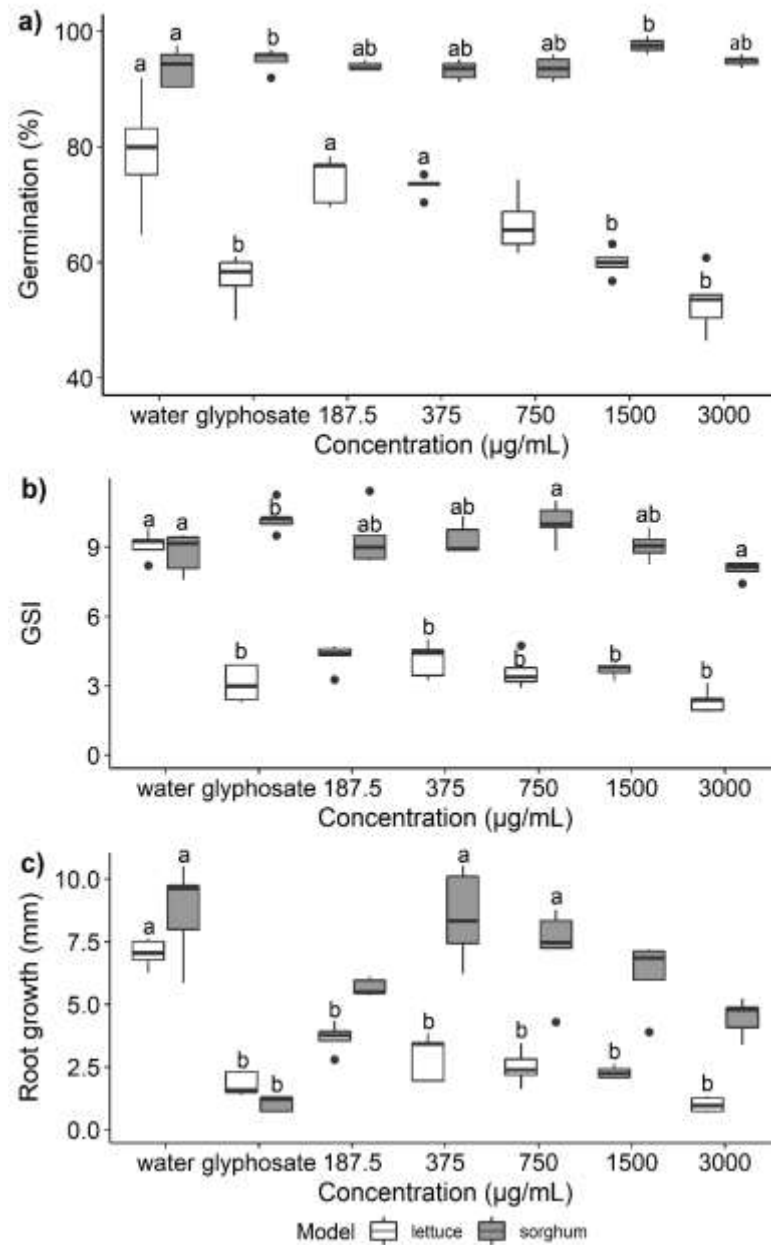
**Figure 3.** Effect of Cortibel Branca LG (C4) essential oil on (a) germination, (b) germination speed index (GSI), and (c) root growth of *Lactuca sativa* and *Sorghum bicolor*. The lowercase letters above boxplots indicates significant differences. Boxplots followed by the letter a are statistically identical to water, boxplots followed by b are statistically identical to glyphosate and boxplots not followed by letters are statistically different from water and glyphosate by Dunnett's test ( $P < 0.05$ ).



Source: Authors.

The chemical composition of essential oils provides clues about their phytotoxic effects. Based on the obtained results of bioassays involving germination and root growth of *L. sativa* and *S. bicolor*, we found that the oils affected the variables GP, GSI, and RG these models, principally in the highest concentration. These effects may be associated with the terpenic nature of essential oils. According to Harborne and Tomas-Barberan (1990), these substances in contact with the soil inhibit the development of other plants, causing decomposition, volatilization, leaching, and exudation of compounds present in the vegetable tissues.

**Figure 4.** Effect of Cortibel VII (C7) essential oil on (a) germination, (b) germination speed index (GSI), and (c) root growth of *Lactuca sativa* and *Sorghum bicolor*. The lowercase letters above boxplots indicates significant differences. Boxplots followed by the letter a are statistically identical to water, boxplots followed by b are statistically identical to glyphosate and boxplots not followed by letters are statistically different from water and glyphosate by Dunnett's test ( $P < 0.05$ ).



Source: Authors.

Among the terpenoids, the sesquiterpenes were the most abundant chemical constituents found in the essential oils of guava cultivars. They are considered a source of active compounds with important biological activity that can act as herbicides (Duke et al., 2000). (E)-caryophyllene, hydrocarbon sesquiterpene present in all essential oils evaluated, except for C4, have allelopathic effects reported for seedlings of *Brassica campestris* and *Raphanus sativus* (Ruilong et al., 2009). Phytotoxic and cytotoxic effects of the essential oil of *Psidium* species on *L. sativa* and *S. bicolor* were associated with the presence of (E)-caryophyllene (Vasconcelos et al., 2019).

Caryophyllene oxide, which is a product of the oxidation of (E)-caryophyllene, oxygenated sesquiterpene found in all

cultivars, was reported for its allelopathic potential, significantly affecting the germination and development of *L. sativa* (Dias et al., 2009). The sesquiterpenes to affect plant growth through oxidative stress in conjunction with effects on physiological processes (Duke & Oliva, 2004). Effects on mitochondrial respiration, distribution, and organization of microtubules are also reported (Araniti et al., 2016; Ibrahim et al., 2013).

Monoterpenes are identified as compounds present in essential oils of plants with greater allelopathic potential, as *Eucalyptus* genus, influencing seed germination, and inhibition of root growth (Amri et al., 2013). The low germination, GSI, and reduction of RG observed for seeds treated with essential oils of C4 and C7 in this study can be justified by the presence of these substances. Essential oils with higher monoterpene content are known for their high ability to suppress weeds (Fagodia et al., 2017). The hydrogenated monoterpene limonene, found mostly in cultivar C4, is known to blocking the nitrogen cycle and inhibiting cytochrome respiration, seed germination and growth in neighboring plants (Maffei et al., 2011). Limonene is used as a leading compound in various formulations of commercial herbicides, such as GreenMatch O, GreenMatch EX, and Avenger® (Dayan et al., 2009).

Vokou et al. (2003) suggest that the herbicide effect of essential oils is due to the combined reactions of various chemical compounds, which can act in an additive, synergistic, and antagonistic way. In this sense, the herbicide activity found in the essential oils of *P. guajava* cultivars can be attributed mainly to the presence of sesquiterpenes and monoterpenes.

Considering the importance of essential oils due to the great applicability they possess, it is essential to know the chemical compounds present in them, since they are responsible for the phytotherapeutic and biological properties. In larvicidal assays with *Aedes aegypti*, performed with the essential oils SEC, C4, C6, PAL and PET, the cultivar SEC presented itself as the most efficient for this purpose, which was attributed to a large amount of sesquiterpene present in the oils (Mendes et al., 2017). When comparing this to the results of this study for the cultivar SEC, was observed that the germination of lettuce and sorghum as well as their root growth were affected only when the highest oil concentration (3000 µg/mL) of the oil was used. So, while SEC on the one hand presented high larvicide activity acting on *A. aegypti* in past studies, our results show that the phytotoxic activity of SEC is less favorable than those of other genotypes. This proves that performing these tests on the potentials of each essential oil, are important to direct them to the most appropriate use.

For all the oils tested the effects were more evident in *L. sativa*, a eudicot, than *S. bicolor*, a monocot. Differences in sensitivity among target species are commonly reported in studies that verify the allelopathy and phytotoxicity of plants (Hazrati et al., 2017; Vasconcelos et al., 2019). These differences are related to the variation of the mechanisms of absorption, translocation, and the place of action of substances among different target species, which may explain the differences in selectivity among the species tested in this work (Oliveira Jr., 2011).

### 3.3 Cytotoxicity effects

Cytotoxicity analyses were performed to investigate the toxic effect of the essential oil of *P. guajava* cultivars on the cell cycle of lettuce and to determine the mode of action involved in the inhibition of the germination variables (GP and GSI) and root growth of lettuce and sorghum. Based on MI, as well as NA and CA were founded low cytotoxicity effects of the essential oils of *P. guajava* cultivars when compared to the positive control. The exposure to the highest concentrations of the evaluated oils caused the greatest damage to the meristematic lettuce cells (Table 2).

**Table 2.** Analysis of meristematic root cells of *Lactuca sativa* treated with different concentrations ( $\mu\text{g/mL}$ ) of the essential oil of cultivars of *Psidium guajava*.

Cultivar	Concentration ( $\mu\text{g/mL}$ )	MI%	NA%	CA%
C4	water	*9.60 $\pm$ 0.35 a	0.00 $\pm$ 0.00 a	8.73 $\pm$ 1.63 a
	glyphosate	2.76 $\pm$ 0.62 b	1.03 $\pm$ 0.32 b	33.15 $\pm$ 7.55 b
	187.5	8.29 $\pm$ 1.14 a	0.00 $\pm$ 0.00 a	5.83 $\pm$ 4.43 a
	375	8.10 $\pm$ 0.49 a	0.1 $\pm$ 0.14 a	9.92 $\pm$ 1.19 a
	750	7.83 $\pm$ 0.40 a	0.1 $\pm$ 0.14 a	15.66 $\pm$ 1.84 a
	1500	8.44 $\pm$ 0.81 a	0.06 $\pm$ 0.09 a	15.21 $\pm$ 2.89 a
	3000	5.80 $\pm$ 0.92	0.0 $\pm$ 0.00 a	22.16 $\pm$ 3.91b
C7	water	8.66 $\pm$ 1.10 a	0.00 $\pm$ 0.00 a	8.79 $\pm$ 5.03 a
	glyphosate	1.58 $\pm$ 0.92 b	0.06 $\pm$ 0.12 b	13.89 $\pm$ 11.35 b
	187.5	8.00 $\pm$ 2.20 a	0.08 $\pm$ 0.16 ab	17.29 $\pm$ 2.15 ab
	375	7.52 $\pm$ 0.76 a	0.00 $\pm$ 0.00 ab	16.73 $\pm$ 3.71 ab
	750	7.19 $\pm$ 0.79 a	0.00 $\pm$ 0.00 ab	14.02 $\pm$ 2.35 ab
	1500	7.14 $\pm$ 1.25 a	0.74 $\pm$ 1.48 ab	15.88 $\pm$ 3.21 ab
	3000	6.78 $\pm$ 1.06 a	1.00 $\pm$ 0.63 ab	19.30 $\pm$ 6.04 ab
PAL	water	9.7 $\pm$ 0.08 a	0.00 $\pm$ 0.00 a	11.01 $\pm$ 2.76 a
	glyphosate	1.63 $\pm$ 0.44 b	0.33 $\pm$ 0.28 b	38.44 $\pm$ 13.76 b
	187.5	9.1 $\pm$ 0.16 a	0.00 $\pm$ 0.00 ab	9.18 $\pm$ 5.18 a
	375	8.6 $\pm$ 0.24 a	0.00 $\pm$ 0.00 ab	4.57 $\pm$ 3.23 a
	750	7.23 $\pm$ 0.86	0.1 $\pm$ 0.14 ab	15.56 $\pm$ 1.06 a
	1500	7.06 $\pm$ 1.09	0.06 $\pm$ 0.09 ab	18.46 $\pm$ 3.71 a
	3000	6.46 $\pm$ 0.40	0.06 $\pm$ 0.09 ab	10.70 $\pm$ 3.89 a
SEC	water	9.9 $\pm$ 0.45 a	0.00 $\pm$ 0.00 a	7.79 $\pm$ 1.27 a
	glyphosate	1.83 $\pm$ 0.65 b	0.1 $\pm$ 0.14 b	47.77 $\pm$ 9.17 b
	187.5	8.03 $\pm$ 0.28	0.00 $\pm$ 0.00 ab	7.92 $\pm$ 3.25 a
	375	8.67 $\pm$ 0.18 a	0.00 $\pm$ 0.00 ab	10.01 $\pm$ 2.78 a
	750	7.49 $\pm$ 0.73	0.1 $\pm$ 0.14 ab	14.26 $\pm$ 0.26 a
	1500	8.93 $\pm$ 0.40 a	0.16 $\pm$ 0.12 ab	16.22 $\pm$ 7.45 a
	3000	8.01 $\pm$ 0.22	0.00 $\pm$ 0.00 ab	17.91 $\pm$ 4.16 a

MI% = mitotic index, CA% = chromosome alterations out of the total of cells, NA% = nuclear alterations out of the total of cells. Cultivars: C4 (Cortibel branca LG), C7 (Cortibel 7), PAL (Paluma) and SEC (Século XXI). \* Means in the columns followed by the letter a are statistically identical to water, means followed by b are statistically identical to glyphosate and means not followed by letters are statistically different from water and glyphosate, by Dunnett's test ( $p < 0.05$ ).

Source: Authors.

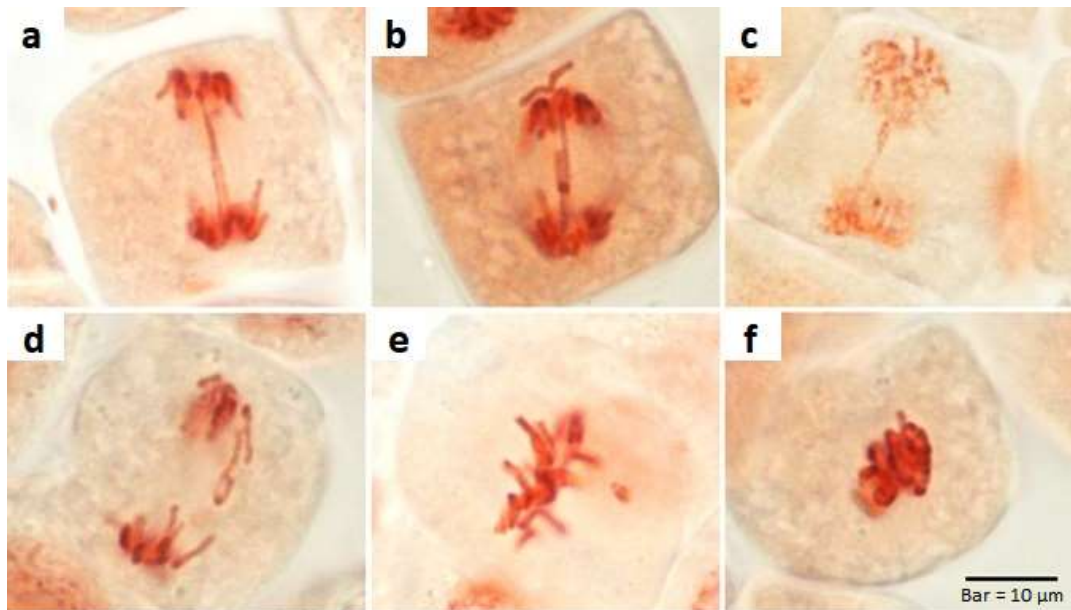
In general, MI was the variable most affected by the essential oils, differing statistically from the negative and positive controls at the concentration 3000  $\mu\text{g/mL}$ . We could observe a decrease in MI with increasing PAL concentrations, showing a decline at 750 (25.47%), 1500 (27.22%), and 3000  $\mu\text{g/mL}$  (33.41%) concerning the negative control. For NA, the negative and positive controls showed little difference, with zero or low frequency of alterations. For CA, only the highest concentration of cultivar C4 showed the statistical difference to the negative control, with an increase of approximately 54% in alterations. The other tested essential oils were statistically equal to the two controls (C7) or only to the negative control (PAL and SEC). This result may be related to the reduction of the macroscopic variables found in the phytotoxic analyses.

According to Harashima & Schnittger (2010), cell division and plant growth are associated with cell proliferation, where changes in the cell cycle act directly on the percentage of germination, germination speed index, and root growth. The reduction of MI is the result of the blockade of the mitotic division, preventing the beginning of the prophase and, consequently, the cell division (Sousa et al., 2009). The MI is a parameter used to indicate the cytotoxic effect of substances (Leme & Marin-Morales, 2009). MI reduction was also observed in meristematic cells of *L. sativa* treated with the essential oil of *Psidium cattleianum*, *P. myrtilodes*, *P. friedrichsthalianum* and *P. gaudichaudianum* (Vasconcelos et al., 2019).

Sesquiterpenes and monoterpenes are allelochemical compounds reported for causing the reduction of mitotic activity and formation of lipid cells in plants, causing inhibition of germination and root growth in several species (Vaughn & Spencer, 1993). In plants, these substances derived from secondary metabolism act as phytoalexins – substances synthesized anew by plants, and responsible for chemically combating the growth and propagation of parasitic bacteria and fungi (Barbosa et al., 2007).

Table 3 shows the frequency of chromosomal alterations found in the meristematic cells of *L. sativa*. We observed that the exposure to essential oils caused the occurrence of chromosome loss, chromosomal breaks, adherent chromosomes, c-metaphases and bridges (Figure 5). A significant increase in the frequency of alterations, however, was observed only at the highest concentrations. Cultivar C4 caused the highest frequency of adherent chromosomes at a concentration of 1500 µg/mL and of bridges at 3000 µg/mL, differing from the negative control. In C7, the highest concentration of the oil (3000 µg/mL) led to an increase in the frequency of c-metaphases, but without being statistically different from the positive control. The oil of the PAL cultivar led to an increase in the percentage of adherent chromosomes in relation to the negative control at concentrations of 750 and 1500 µg/mL. The SEC oil led to the increase of adherent chromosomes and bridges concerning the negative control at the highest concentration. For chromosome breaking, chromosomal alterations and lost chromosomes, all essential oils caused very low or zero frequencies and were statistically not different from negative and positive control.

**Figure 5.** Examples of the main cell cycle alterations in meristematic cells of *Lactuca sativa* exposed to different concentrations of the essential oils of the cultivars of *Psidium guajava*. (a) and (b) anaphase with bridge, (c) telophase with bridge, (d) chromosomic fragment in anaphase, (e) chromosome loss and (f) adherent chromosome.



Source: Authors.

**Table 3.** Chromosomal alterations observed in meristematic root cells of *Lactuca sativa* treated with different concentrations of the essential oil of cultivars of *Psidium guajava*.

Cultivar	Concentration (µg/mL)	Lost%	Breakage%	Adherent%	C-met%	Bridge%
C4	water	*0.00 ± 0.00 a	0.00 ± 0.00 a	0.36 ± 0.51 a	6.99 ± 1.27 a	1.04 ± 1.21 a
	glyphosate	2.51 ± 1.95 b	0.00 ± 0.00 b	0.00 ± 0.00 b	26.84 ± 9.98 b	1.28 ± 1.81 b
	187.5	0.73 ± 0.51 ab	0.00 ± 0.00 ab	1.48 ± 1.40 ab	2.88 ± 3.31 a	2.39 ± 0.50 ab
	375	0.00 ± 0.00 ab	0.00 ± 0.00 ab	3.31 ± 1.52 a	5.31 ± 3.05 a	1.23 ± 1.10 ab
	750	1.23 ± 0.97 ab	0.88 ± 0.00 ab	3.34 ± 1.46 a	6.80 ± 1.14 a	1.29 ± 0.97 ab
	1500	0.00 ± 0.00 ab	0.00 ± 0.00 ab	6.68 ± 1.15	5.28 ± 1.52 a	0.35 ± 0.21 ab
	3000	0.74 ± 1.04 ab	0.52 ± 0.74 ab	3.04 ± 1.19 ab	13.79 ± 2.81 a	4.05 ± 0.62
C7	water	0.00 ± 0.00 a	0.00 ± 0.00 a	1.60 ± 2.19 a	5.87 ± 3.34 a	1.08 ± 0.66 a
	glyphosate	0.90 ± 1.81 b	0.00 ± 0.00 b	0.00 ± 0.00 b	12.98 ± 10.77 b	0.00 ± 0.00 b
	187.5	0.21 ± 0.43 ab	0.55 ± 1.11 ab	1.76 ± 2.06 ab	11.00 ± 1.31 ab	2.21 ± 1.87 ab
	375	0.24 ± 0.48 ab	0.24 ± 0.49 ab	2.07 ± 2.28 ab	10.03 ± 2.39 ab	2.35 ± 1.60 ab
	750	0.00 ± 0.00 ab	0.63 ± 1.26 ab	0.89 ± 1.21 ab	10.76 ± 3.02 ab	0.57 ± 0.70 ab
	1500	0.00 ± 0.00 ab	0.46 ± 0.93 ab	0.79 ± 0.65 ab	11.09 ± 1.79 ab	2.71 ± 2.86 ab
	3000	0.00 ± 0.00 ab	1.05 ± 2.10 ab	0.92 ± 0.80 ab	14.70 ± 3.98 b	1.43 ± 1.29 ab
PAL	water	0.00 ± 0.00 a	0.00 ± 0.00 a	0.68 ± 0.97 a	8.94 ± 1.99 a	1.37 ± 0.73 a
	glyphosate	0.00 ± 0.00 b	0.00 ± 0.00 b	0.00 ± 0.00 b	35.41 ± 14.84 b	0.00 ± 0.00 b
	187.5	0.00 ± 0.00 ab	0.00 ± 0.00 ab	2.93 ± 1.40 a	7.19 ± 3.22	0.35 ± 0.50 ab
	375	0.38 ± 0.54 ab	0.37 ± 0.52 ab	0.38 ± 0.54 ab	3.03 ± 2.31	0.00 ± 0.00 ab
	750	0.90 ± 1.27 ab	0.00 ± 0.00 ab	4.21 ± 0.52	9.5 ± 1.90 a	0.40 ± 0.57 ab
	1500	1.09 ± 1.54 ab	1.53 ± 2.17 ab	6.27 ± 2.14	6.91 ± 3.22 a	0.77 ± 1.09 ab
	3000	0.49 ± 0.69 ab	0.00 ± 0.00 ab	1.96 ± 1.83 ab	7.19 ± 1.20 a	0.49 ± 0.69 ab
SEC	water	0.31 ± 0.44 a	0.00 ± 0.00 a	0.70 ± 1.00 a	7.50 ± 2.00 a	1.04 ± 0.86 a
	glyphosate	1.96 ± 2.77 b	0.00 ± 0.00 b	1.23 ± 1.74 b	39.59 ± 8.77 b	1.96 ± 2.77 b
	187.5	0.39 ± 0.56 ab	0.00 ± 0.00 ab	2.12 ± 2.22 ab	5.00 ± 1.13	0.00 ± 0.00 ab
	375	0.76 ± 0.53 ab	0.00 ± 0.00 ab	2.33 ± 1.67 ab	5.00 ± 3.06	1.52 ± 0.50 ab
	750	0.83 ± 0.59 ab	0.52 ± 0.73 ab	3.65 ± 0.92 ab	7.51 ± 1.12 a	1.33 ± 1.00 ab
	1500	1.16 ± 1.64 ab	0.00 ± 0.00 ab	4.11 ± 2.38 ab	8.23 ± 0.80 a	1.15 ± 0.94 ab
	3000	0.74 ± 1.04 ab	0.52 ± 0.74 ab	3.04 ± 1.19 ab	13.79 ± 2.81	4.05 ± 0.62 b

Lost% = chromosome loss, Breakage% = chromosomal breaks, Adherent% = adherent chromosomes, C-met% = c-metaphases and Bridge% = chromosome bridges. Cultivars: C4 (Cortibel branca LG), C7 (Cortibel 7), PAL (Paluma) and SEC (Século XXI). \*Means in the columns followed by the letter a are statistically identical to water, means followed by b are statistically identical to glyphosate and means not followed by letters are statistically different from water and glyphosate, by Dunnett's test (p < 0.05).

Source: Authors.

The presence of chromosomal alterations shows the genotoxic effect while the nuclear alterations show the mutagenic effect, these alterations modify the structure and/or quantity of chromosomes (Fiskesjö, 1985). In this study, it was possible to observe a higher incidence of chromosomal alterations of the bridge type, c-metaphase, and adherent chromosomes, demonstrating the genotoxic effect of essential oils.

Chromosomal bridges are clastogenic alterations that indicate some action in the structure of the DNA. They usually occur in anaphase and telophase and are related to terminal breaks (telomere loss) in both chromatids of a chromosome followed by the union of the same (Leme & Marin-Morales, 2009; Matsumoto et al., 2006). The adherent chromosomes and c-metaphases are alterations that indicate the aneugenic mode of action. The adherent chromosomes reflect a change in the chromosomal structure, leading to the loss of the normal characteristics of condensation and the formation of agglomerates. This change is irreversible and can lead to cell death, thus evidencing a strong cytotoxic effect (Babich, 1997; El-Ghamery et al., 2003). The c-metaphases are alterations that point to the action toxic compounds in the spindle fibers, paralyzing the mitotic cycle in metaphase. This alteration is characterized by scattered and condensed chromosomes with very well-defined centromeres in the interior of the cell (Fiskesjö, 1985; Leme & Marin-Morales, 2009).

Essential oils of cultivars C4 and SEC presented both modes of action, aneugenic and clastogenic since was observed a higher frequency of alterations of type bridges, adherent chromosomes, and c-metaphase compared to the negative control. The essential oils of C7 and PAL presented a higher frequency of chromosomes in c-metaphase, characterizing them as aneugenic essential oil. Given the above, the terpene constitution of essential oils and the interactions between these compounds inducing several chromosomal abnormalities, which are responsible for inhibition of germination, germination speed index and root growth of the model plants.

#### 4. Conclusions

This study showed the allelopathic potential of *P. guajava* cultivars essential oils in plant bioassays lettuce and sorghum. The effects were more evident in *L. sativa* than *S. bicolor*, demonstrating greater sensitivity of lettuce to the tested compounds. The exposure of the tested species to the essential oils caused the reduction of germination, root growth, and mitotic index in *L. sativa*. In general, the highest concentrations (3000 µg/mL) of the oils caused more evident effects in the analyses performed.

We also observed an increase in the percentage of chromosomal changes, such as bridges, c-metaphase and adherent chromosome in *L. sativa* meristematic cells. These alterations reveal the aneugenic and clastogenic mode of action associated with the oils. Phytotoxic, cytotoxic and genotoxic activity of essential oils may be associated with the terpene constitution of essential oils and the interactions between these compounds, mainly by the presence of caryophyllene oxide, (E)-caryophyllene and limonene. Given the above, the essential oils of guava cultivars are potential sources for the development of natural and sustainable herbicides due to their inhibitory activity in plants.

#### Acknowledgments

We would like to thank the Conselho Nacional de Desenvolvimento Científico e Tecnológico (CNPq, Brasília—DF, Brazil; Grants 311950/2016-7), Fundação de Amparo à Pesquisa do Espírito Santo (FAPES/VALE, Vitória—ES, Brazil; Grant 75516586/16 and FAPES/UNIVERSAL, Vitória—ES, Brazil; Grant 180/2017 and 80707114/18). This study was financed in part by the Coordenação de Aperfeiçoamento de Pessoal de Nível Superior—Brasil (CAPES)—Finance Code 001.

#### References

- Adams, R. P. (2007). *Identification of essential oil components by gas chromatography/mass spectrometry* (Ed. 4). Allured Publishing Corporation.
- Almeida, L., Teixeira, M. C., Lemos, J. R., Lacerda, M. N., & Silva, T. C. (2019). Bioatividade de óleos essenciais na germinação e no vigor em sementes de tomate. *Biotemas*, 32(2), 13–21.
- Alves, T. de A., Pinheiro, P. F., Fontes, M. M. P., Andrade-Vieira, L. F., Corrêa, K. B., Alves, T. A., Cruz, F. A., Júnior, V. L., Ferreira, A., & Soares, T. C. B. (2018). Toxicity of thymol, carvacrol and their respective phenoxyacetic acids in *Lactuca sativa* and *Sorghum bicolor*. *Industrial Crops and Products*, 114, 59–67. <https://doi.org/10.1016/j.indcrop.2018.01.071>
- Amri, I., Hamrouni, L., Hanana, M., Gargouri, S., Fezzani, T., & Jamoussi, B. (2013). Chemical composition, physico-chemical properties, antifungal and herbicidal activities of *Pinus halepensis* Miller essential oils. *Biological Agriculture and Horticulture*, 29(2), 91–106. <https://doi.org/10.1080/01448765.2013.764486>
- Andrade-Vieira, L. F., Botelho, C. M., Palmieri, M. J., Laviola, B. G., & Praça-Fontes, M. M. (2014). Effects of *Jatropha curcas* oil in *Lactuca sativa* root tip bioassays. *Anais da Academia Brasileira de Ciências*, 86(1), 373-382. <http://dx.doi.org/10.1590/0001-3765201420130041>
- Aragão, F. B., Queiroz, V. T., Ferreira, A., Costa, A. V., Pinheiro, P. F., Carrijo, T. T., & Andrade-Vieira, L. F. (2017). Phytotoxicity and cytotoxicity of *Lepidaploa rufogrisea* (Asteraceae) extracts in the plant model *Lactuca sativa* (Asteraceae). *Revista de Biologia Tropical*, 65(2) 1-10. <https://doi.org/10.15517/rbt.v65i2.25696>
- Araniti, F., Graña, E., Krasuska, U., Bogatek, R., Reigosa, M. J., Abenavoli, M. R., & Sánchez-Moreiras, A. M. (2016). Loss of gravitropism in farnesene-treated arabidopsis is due to microtubule malformations related to hormonal and ROS unbalance. *PLoS ONE*, 11(8), 1–26. <https://doi.org/10.1371/journal.pone.0160202>

- Aslam, F., Khaliq, A., Matloob, A., Tanveer, A., Hussain, S., & Zahir, Z. A. (2017). Allelopathy in agro-ecosystems: a critical review of wheat allelopathy-concepts and implications. *Chemoecology*, 27(1). <https://doi.org/10.1007/s00049-016-0225-x>
- Babich, H. (1997). The “Allium” test: A simple, eukaryote genotoxicity assay. *The American Biology Teacher*, 59(9), 580–583. <https://doi.org/10.2307/4450386>
- Barbosa, L. C. A., Demuner, A. J., Clemente, A. D., Paula, V. F., & Ismail, F. M. D. (2007). Seasonal variation in the composition of volatile oils from *Schinus terebinthifolius* Raddi. *Química Nova*, 30(8), 1959–1965. <https://doi.org/10.1590/S0100-40422007000800030>
- Beech, E., Rivers, M., Oldfield, S., & Smith, P. P. (2017). GlobalTreeSearch: the first complete global database of tree species and country distributions. *Journal of Sustainable Forestry*, 36, 454–489. <https://doi.org/10.1080/10549811.2017.1310049>
- Boaro, C. S. F., Vieira, M. A. R., Campos, F. G., Ferreira, G., Chacón, I. D. C., & Marques, M. O. M. (2019). Factors influencing the production and chemical composition of essential oils in aromatic plants from Brazil. *Essential Oil Research*, 19–47. [https://doi.org/10.1007/978-3-030-16546-8\\_2](https://doi.org/10.1007/978-3-030-16546-8_2)
- Caputo, L., Smeriglio, A., Trombetta, D., Cornara, L., Trevena, G., Valussi, M., Fratianni, F., Feo, V., & Nazzaro, F. (2020). Chemical composition and biological activities of the essential oils of *Leptospermum petersonii* and *Eucalyptus gunnii*. *Frontiers in Microbiology*, 11, 1–15. <https://doi.org/10.3389/fmicb.2020.00409>
- Chaturvedi, T., Singh, S., Nishad, I., Kumar, A., Tiwari, N., Tandon, S., Saikia, D., & Verma, R. S. (2019). Chemical composition and antimicrobial activity of the essential oil of senescent leaves of guava (*Psidium guajava* L.). *Natural Product Research*, 35, 1393–1397. <https://doi.org/10.1080/14786419.2019.1648462>
- Dayan, F. E., Cantrell, C. L., & Duke, S. O. (2009). Natural products in crop protection. *Bioorganic and Medicinal Chemistry*, 17(12), 4022–4034. <https://doi.org/10.1016/j.bmc.2009.01.046>
- Dayan, F. E., & Duke, S. O. (2014). Natural compounds as next-generation herbicides. *Plant Physiology*, 166(3), 1090–1105. <https://doi.org/10.1104/pp.114.239061>
- Dias, J. D. F. G., Miguel, O. G., & Miguel, M. D. (2009). Composition of essential oil and allelopathic activity of aromatic water of *Aster lanceolatus* Willd. (Asteraceae). *Brazilian Journal of Pharmaceutical Sciences*, 45(3), 469–474. <https://doi.org/10.1590/S1984-82502009000300012>
- Duke, S. O., & Oliva, A. (2004). Mode of action of phytotoxic terpenoids. In H. Macias, F., Galindo, J., Molinillo, J., Cutler (Ed.), *Allelopathy: Chemistry and mode of action of allelochemicals*. CRC Press. <https://doi.org/10.1201/9780203492789.ch10>
- Duke, Stephen O., Romagni, J. G., & Dayan, F. E. (2000). Natural products as sources for new mechanisms of herbicidal action. *Crop Protection*, 19, 583–589. [https://doi.org/10.1016/S0261-2194\(00\)00076-4](https://doi.org/10.1016/S0261-2194(00)00076-4)
- Durazzini, A. M. S., Machado, C. H. M., Fernandes, C. C., Willrich, G. B., Crotti, A. E. M., Candido, A. C. B. B., Magalhães, L. G., Squarisi, I. S., Ribeiro, A. B., Tavares, D. C., Martins, C. H. G., & Miranda, M. L. D. (2019). *Eugenia pyriformis* Cambess: a species of the Myrtaceae family with bioactive essential oil. *Natural Product Research*. <https://doi.org/10.1080/14786419.2019.1669031>
- El-Ghamery, A. A., El-Kholy, M. A., & Abou El-Yousser, M. A. (2003). Evaluation of cytological effects of Zn<sup>2+</sup> in relation to germination and root growth of *Nigella sativa* L. and *Triticum aestivum* L. *Mutation Research - Genetic Toxicology and Environmental Mutagenesis*, 537, 29–41. [https://doi.org/10.1016/S1383-5718\(03\)00052-4](https://doi.org/10.1016/S1383-5718(03)00052-4)
- Fagodia, S. K., Singh, H. P., Batish, D. R., & Kohli, R. K. (2017). Phytotoxicity and cytotoxicity of *Citrus aurantiifolia* essential oil and its major constituents: Limonene and citral. *Industrial Crops and Products*, 108, 708–715. <https://doi.org/10.1016/j.indcrop.2017.07.005>
- Fiskesjö, G. (1985). The Allium test as a standard in environmental monitoring. *Hereditas*, 102(1), 99–112. <https://doi.org/10.1111/j.1601-5223.1985.tb00471.x>
- Giunti, G., Campolo, O., Laudani, F., Zappalà, L., & Palmeri, V. (2021). Bioactivity of essential oil-based nano-biopesticides toward *Rhyzopertha dominica* (Coleoptera: Bostrichidae). *Industrial Crops and Products*, 162, 113257. <https://doi.org/10.1016/j.indcrop.2021.113257>
- Gruľová, D., Caputo, L., Elshafie, H. S., Baranová, B., De Martino, L., Sedlák, V., Gogaľová, Z., Poráčová, J., Camele, I., & Feo, V. (2020). Thymol chemotype *Origanum vulgare* L. essential oil as a potential selective bio-based herbicide on monocot plant species. *Molecules*, 25(3), 595. <https://doi.org/10.3390/molecules25030595>
- Habermann, E., Pereira, V. D. C., Imatomi, M., Pontes, F. C. & Gualtieri, S. C. J. (2017). In vitro herbicide activity of crude and fractionated leaf extracts of *Blepharocalyx salicifolius* (Myrtaceae). *Brazilian Journal of Botany*, 40, 33–40. <https://doi.org/10.1007/s40415-016-0317-4>
- Harashima, H., & Schnittger, A. (2010). The integration of cell division, growth and differentiation. *Current Opinion in Plant Biology*, 13(1), 66–74. <https://doi.org/10.1016/j.pbi.2009.11.001>
- Harborne, J. B., & Tomas-Barberan, F. A. (1990). *Ecological chemistry and biochemistry of plant terpenoids*. Clarendon Press.
- Hayes, W. B. (1953). *Fruit Growing in India*. Allahabad.
- Hazrati, H., Saharkhiz, M. J., Niakousari, M., & Moein, M. (2017). Natural herbicide activity of *Satureja hortensis* L. essential oil nanoemulsion on the seed germination and morphophysiological features of two important weed species. *Ecotoxicology and Environmental Safety*, 142, 423–430. <https://doi.org/10.1016/j.ecoenv.2017.04.041>
- Ibrahim, M., Farooq, T., Hussain, N., Hussain, A., Gulzar, T., Hussain, I., Akash, M. S., & Rehmani, F. S. (2013). Acetyl and butyryl cholinesterase inhibitory sesquiterpene lactones from *Amberboa ramosa*. *Chemistry Central Journal*, 7(1), 3–7. <https://doi.org/10.1186/1752-153X-7-116>



- Inderjit, Wardle, D. A., Karban, R., & Callaway, R. M. (2011). The ecosystem and evolutionary contexts of allelopathy. *Trends in Ecology and Evolution*, 26, 655–662. <https://doi.org/10.1016/j.tree.2011.08.003>
- Jabran, K., Mahajan, G., Sardana, V., & Chauhan, B. S. (2015). Allelopathy for weed control in agricultural systems. *Crop Protection*, 72, 57–65. <https://doi.org/10.1016/j.cropro.2015.03.004>
- Jana, A., & Biswas, S. M. (2011). Lactam nonanic acid, a new substance from *Cleome viscosa* with allelopathic and antimicrobial properties. *Journal of Biosciences*, 36(1), 27–35. <https://doi.org/10.1007/s12038-011-9001-9>
- Jerônimo, L. B., da Costa, J. S., Pinto, L. C., Montenegro, R. C., Setzer, W. N., Mourão, R. H. V., da Silva, J. K. R., Maia, J. G. S., & Figueiredo, P. L. B. (2021). Antioxidant and cytotoxic activities of Myrtaceae essential oils rich in terpenoids from Brazil. *Natural Product Communications*, 16(2), 1934578X2199615. <https://doi.org/10.1177/1934578X21996156>
- Khadhri, A., El Mokni, R., Almeida, C., Nogueira, J. M. F., & Araújo, M. E. M. (2014). Chemical composition of essential oil of *Psidium guajava* L. growing in Tunisia. *Industrial Crops and Products*, 52, 29–31. <https://doi.org/10.1016/j.indcrop.2013.10.018>
- Lee, W. C., Mahmud, R., Noordin, R., Pillai Piaru, S., Perumal, S., & Ismail, S. (2013). Free radicals scavenging activity, cytotoxicity and anti-parasitic activity of essential oil of *Psidium guajava* L. leaves against *Toxoplasma gondii*. *Journal of Essential Oil-Bearing Plants*, 16(1), 32–38. <https://doi.org/10.1080/0972060X.2013.764196>
- Leme, D. M., & Marin-Morales, M. A. (2009). *Allium cepa* test in environmental monitoring: A review on its application. *Mutation Research - Reviews in Mutation Research*, 682, 71–81. <https://doi.org/10.1016/j.mrrev.2009.06.002>
- Nist standard reference database 69. (2011). *NIST Chemistry WebBook*. <https://webbook.nist.gov/chemistry>.
- Maffei, M. E., Gertsch, J., & Appendino, G. (2011). Plant volatiles: production, function and pharmacology. *Natural Product Reports*, 28(8), 1359–1380. <https://doi.org/10.1039/c1np00021g>
- Matoba, H., Mizutani, T., Nagano, K., Hoshi, Y., & Uchiyama, H. (2007). Chromosomal study of lettuce and its allied species (*Lactuca* spp., Asteraceae) by means of karyotype analysis and fluorescence in situ hybridization. *Hereditas*, 144(6), 235–243. <https://doi.org/10.1111/j.2007.0018-0661.02012x>
- Matsumoto, S. T., Mantovani, M. S., Malagutti, M. I. A., Dias, A. L., Fonseca, I. C., & Marin-Morales, M. A. (2006). Genotoxicity and mutagenicity of water contaminated with tannery effluents as evaluated by the micronucleus test and comet assay using the fish *Oreochromis niloticus* and chromosome aberrations in onion root-tips. *Genetics and Molecular Biology*, 29, 148–158. <https://doi.org/10.1590/S1415-47572006000100028>
- Mendes, L. A., Martins, G. F., Valbon, W. R., Souza, T. S., Menini, L., Ferreira, A., & Ferreira, M. F. S. (2017). Larvicidal effect of essential oils from Brazilian cultivars of guava on *Aedes aegypti* L. *Industrial Crops and Products*, 108, 684–689. <https://doi.org/10.1016/j.indcrop.2017.07.034>
- Navarro-Rocha, J., Andrés, M. F., Díaz, C. E., Burillo, J., & González-Coloma, A. (2020). Composition and biocidal properties of essential oil from pre-domesticated spanish *Satureja montana*. *Industrial Crops and Products*, 145, 111958. <https://doi.org/10.1016/j.indcrop.2019.111958>
- Oliveira Jr., R. S. (2011). *Mecanismos de Ação de Herbicidas in Biologia e Manejo de plantas Daninhas*. Omnipax.
- Pinheiro, P. F., Costa, A. V., Alves, T. A., Galter, I. N., Pinheiro, C. A., Pereira, A. F., Oliveira, C. M. R., & Fontes, M. M. P. (2015). Phytotoxicity and cytotoxicity of essential oil from leaves of *Plectranthus amboinicus*, carvacrol, and thymol in plant bioassays. *Journal of Agricultural and Food Chemistry*, 63(41), 8981–8990. <https://doi.org/10.1021/acs.jafc.5b03049>
- R Development Core Team. (2020). R: A language and environment for statistical computing. R Foundation for Statistical Computing, Vienna, Austria. <http://www.R-project.org/>
- Rajkumar, V., Gunasekaran, C., Paul, C. A., & Dharmaraj, J. (2020). Development of encapsulated peppermint essential oil in chitosan nanoparticles: characterization and biological efficacy against stored-grain pest control. *Pesticide Biochemistry and Physiology*, 170, 104679. <https://doi.org/10.1016/j.pestbp.2020.104679>
- Ribas, P. P., & Matsumura, A. T. S. (2009). A química dos agrotóxicos: impacto sobre a saúde e meio ambiente. *Revista Liberato*, 10(14), 149–158. <https://doi.org/10.31514/rliberato.2009v10n14.p149>
- Rice, E. L. (2012). *Allelopathy*. Academic press.
- Ruilong, W., Shaolin, P., Rensen, Z., Ling, W. D., & Zengfu, X. U. (2009). Cloning, expression and wounding induction of  $\beta$ -caryophyllene synthase gene from *Mikania micrantha* H.B.K. and allelopathic potential of  $\beta$ -caryophyllene. *Allelopathy Journal*, 24(1), 35–44.
- Satyal, P., Paudel, P., Lamichhane, B., & Setzer, W. N. (2015). Leaf essential oil composition and bioactivity of *Psidium guajava* from Kathmandu, Nepal. *American Journal of Essential Oils and Natural Products*, 3(2), 11–14.
- Sousa, S. M., Silva, P. S., Campos, J. M. S., & Viccini, L. F. (2009). Cytotoxic and genotoxic effects of two medicinal species of Verbenaceae. *Caryologia*, 62(4), 326–333 <https://doi.org/10.1080/00087114.2004.10589698>
- Scalvenzi, L., Grandini, A., Spagnoletti, A., Tacchini, M., Neill, D., Ballesteros, J., Sacchetti, G., & Guerrini, A. (2017). *Myrcia splendens* (Sw.) DC. (syn. *M. fallax* (Rich.) DC.) (Myrtaceae) essential oil from Amazonian Ecuador: a chemical characterization and bioactivity profile. *Molecules*, 22(7), 1163. <https://doi.org/10.3390/molecules22071163>
- Sharifi-Rad, J., Sureda, A., Tenore, G. C., Daglia, M., Sharifi-Rad, M., Valussi, M., Tundis, R., Sharifi-Rad, M., Loizzo, M. R., Ademiluyi, A. O., Sharifi-Rad, R., Ayatollahi, S. A., & Iriti, M. (2017). Biological activities of essential oils: From plant chemoecology to traditional healing systems. *Molecules*, 22, 70. <https://doi.org/10.3390/molecules22010070>

- Shu, J. C., Liu, J. Q., Chou, G. X., & Wang, Z. T. (2012). Two new triterpenoids from *Psidium guajava*. *Chinese Chemical Letters*, 23(7), 827–830. <https://doi.org/10.1016/j.ccl.2012.05.018>
- Silveira, G. L., Lima, M. G. F., Dos Reis, G. B., Palmieri, M. J. & Andrade-Vieira, L. F. (2017). Toxic effects of environmental pollutants: Comparative investigation using *Allium cepa* L. and *Lactuca sativa* L. *Chemosphere*, 178, 359–367. <https://doi.org/10.1016/j.chemosphere.2017.03.048>
- Soliman, F. M., Fathy, M. M., Salama, M. M., & Saber, F. R. (2016). Comparative study of the volatile oil content and antimicrobial activity of *Psidium guajava* L. and *Psidium cattleianum* Sabine leaves. *Bulletin of Faculty of Pharmacy, Cairo University*, 54(2), 219–225. <https://doi.org/10.1016/j.bfopcu.2016.06.003>
- Souza, T. S., Ferreira, Ferreira, M. S. F., Menini, L., Souza, J. R. C. L., Pareira, L. A., Cecon, P. R., & Ferreira, A. (2017). Essential oil of *Psidium guajava*: Influence of genotypes and environment. *Scientia Horticulturae*, 216, 38–44. <https://doi.org/10.1016/j.scienta.2016.12.026>
- Taban, A., Saharkhiz, M. J., & Naderi, R. (2020). A natural post-emergence herbicide based on essential oil encapsulation by cross-linked biopolymers: characterization and herbicidal activity. *Environmental Science and Pollution Research*, 27(36), 45844–45858. <https://doi.org/10.1007/s11356-020-10405-y>
- Vasconcelos, L. C., Santos, E. S., Bernardes, C. O., Ferreira, M. F. S., Ferreira, A., Tuler, A. C., Carvalho, J. A. M., Pinheiro, P. F., & Praça-Fontes, M. M. (2019). Phytochemical analysis and effect of the essential oil of *Psidium* L. species on the initial development and mitotic activity of plants. *Environmental Science and Pollution Research*, 26, 26216–26228. <https://doi.org/10.1007/s11356-019-05912-6>
- Vaughn, S. F., & Spencer, G. F. (1993). Volatile monoterpenes as potential parent structures for new herbicides. *Weed Science*, 41, 114–119. <https://doi.org/10.1017/s0043174500057672>
- Vokou, D., Douvli, P., Blionis, G. J., & Halley, J. M. (2003). Effects of monoterpenoids, acting alone or in pairs, on seed germination and subsequent seedling growth. *Journal of Chemical Ecology*, 29(10), 2281–2301. <https://doi.org/10.1023/A:1026274430898>
- Weli, A., Al-Kaabi, A., Al-Sabahi, J., Said, S., Hossain, M. A., & Al-Riyami, S. (2019). Chemical composition and biological activities of the essential oils of *Psidium guajava* leaf. *Journal of King Saud University - Science*, 31(4), 993–998. <https://doi.org/10.1016/j.jksus.2018.07.021>
- Wilson, P. G. (2010). Myrtaceae in *Flowering Plants. Eudicots. The Families and Genera of Vascular Plants*. Springer.